

# TUMBLE PILLING TESTER

## TYPE PILI-B AND PILI-II-B

### GENERAL DESCRIPTION

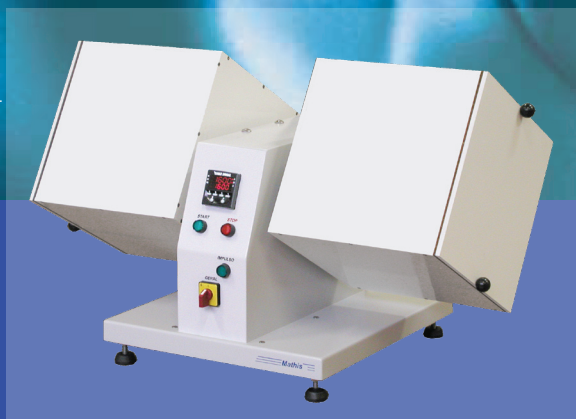
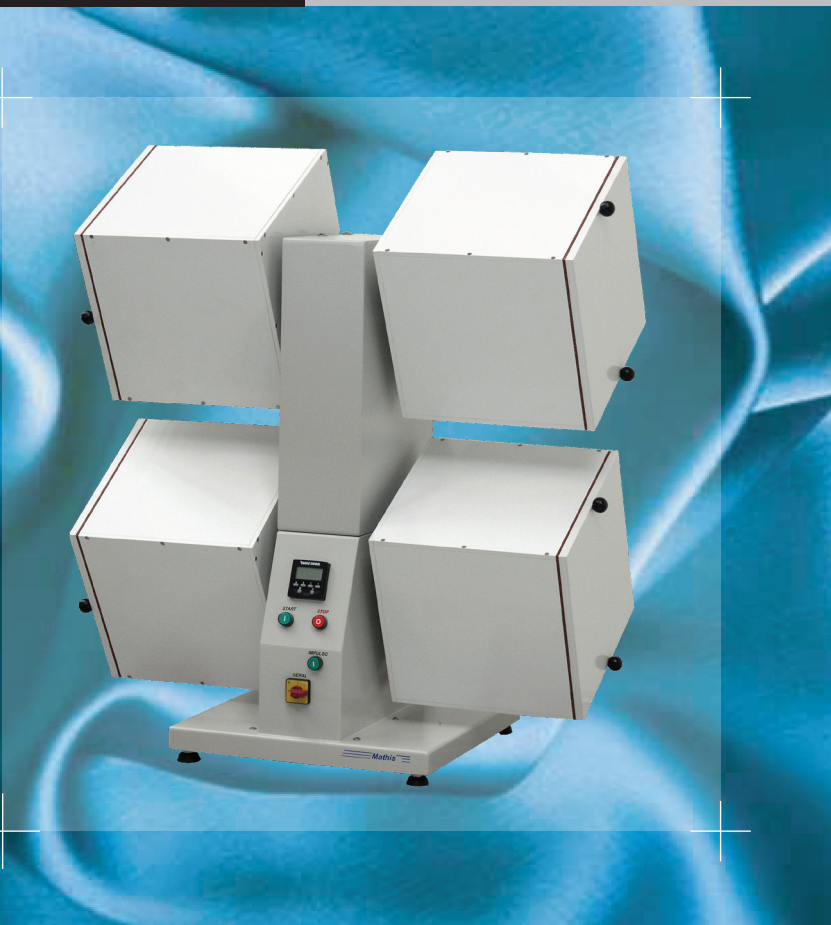
Laboratory equipment designed to simulate the pilling effect (formation of pills) on the surface of textile woven or knitted fabrics.

The (dry) textile samples are kept rotating inside the boxes lined with cork sheet, together with special rubber tubes, to create friction on the sample surface.

Rotation speed is constant. The time of the test is programmable.

Available with boxes according to ISO 12945-1 (2000) and BS 5811:1986 norm or JIS L 1076 norm, with one compartment per box, or with four compartments per box according to Clariant specifications.

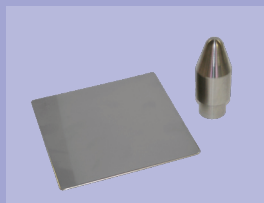
Can be purchased with two boxes (type PILI-B) or with four boxes (type PILI-II-B).



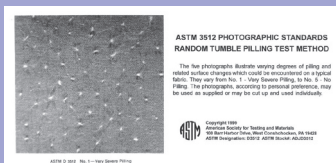
## TECHNICAL DATA - TYPE PILI-B AND PILI-II-B

	PILI-B	PILI-II-B
Number of boxes	2	4
Number of samples	8	16
Timer	1 - 99 h	1 - 99 h
Rotation speed	60 rpm	60 rpm
Power / electric feeding	0,5 kW / 1 x 220 V	0,7 kW / 1 x 220 V
Dimensions	W 69 x L 40 x H 43cm	W 69 x L 40 x H 82 cm
Weight	21 kg	39 kg

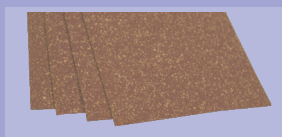
### Accessories:



sample preparation set, with model for cutting out sample



set of 5 photographic standards  
ASTM 3512

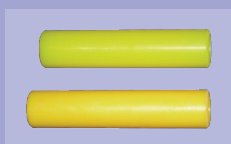


cork liners (3mm thick)



boxes  
23,5cm x 23,5cm x 23,5cm,  
according to norms  
ISO 12945-1 (2000) / BS 5811:1986 / JIS L 1076

with 4 rubber tubes  
per box



ISO / BS norm tube

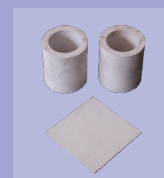


JIS norm tube



box with 4 compartments  
11cm x 11cm x 11cm each  
according to Clariant specifications

with 2 tubes and 1 rubber square  
per compartment



**Werner Mathis AG**  
Rütisbergstrasse 3  
CH-8156 Oberhasli/Zürich, Switzerland  
Telefon: 41(0)44-852 5050  
Telefax: 41(0)44-850 6707  
E-mail info@mathisag.com  
www.mathisag.com

**Werner Mathis U.S.A. Inc.**  
2260 HWY 49 N.E./P.O. Box 1626  
Concord N.C. 28026, U.S.A.  
Phone: 1-704-786-6157  
Fax: 1-704-786-6159  
E-mail: usa@mathisag.com

**Mathis (India) PVT. LTD.**  
203, Swastic plaza  
Pokhran Road No. 2, Thane 400 601  
Phone: +91 22 2585 4304  
E-mail: india@mathisag.com

**Aparelhos de Laboratório Mathis Ltda**  
Estrada dos Estudantes, 261  
06707-050 Cotia - SP, Brasil  
Phone: 55 (0)11-3883-6777  
Fax: 55 (0)11-3883-6750  
E-mail: mathis@mathis.com.br